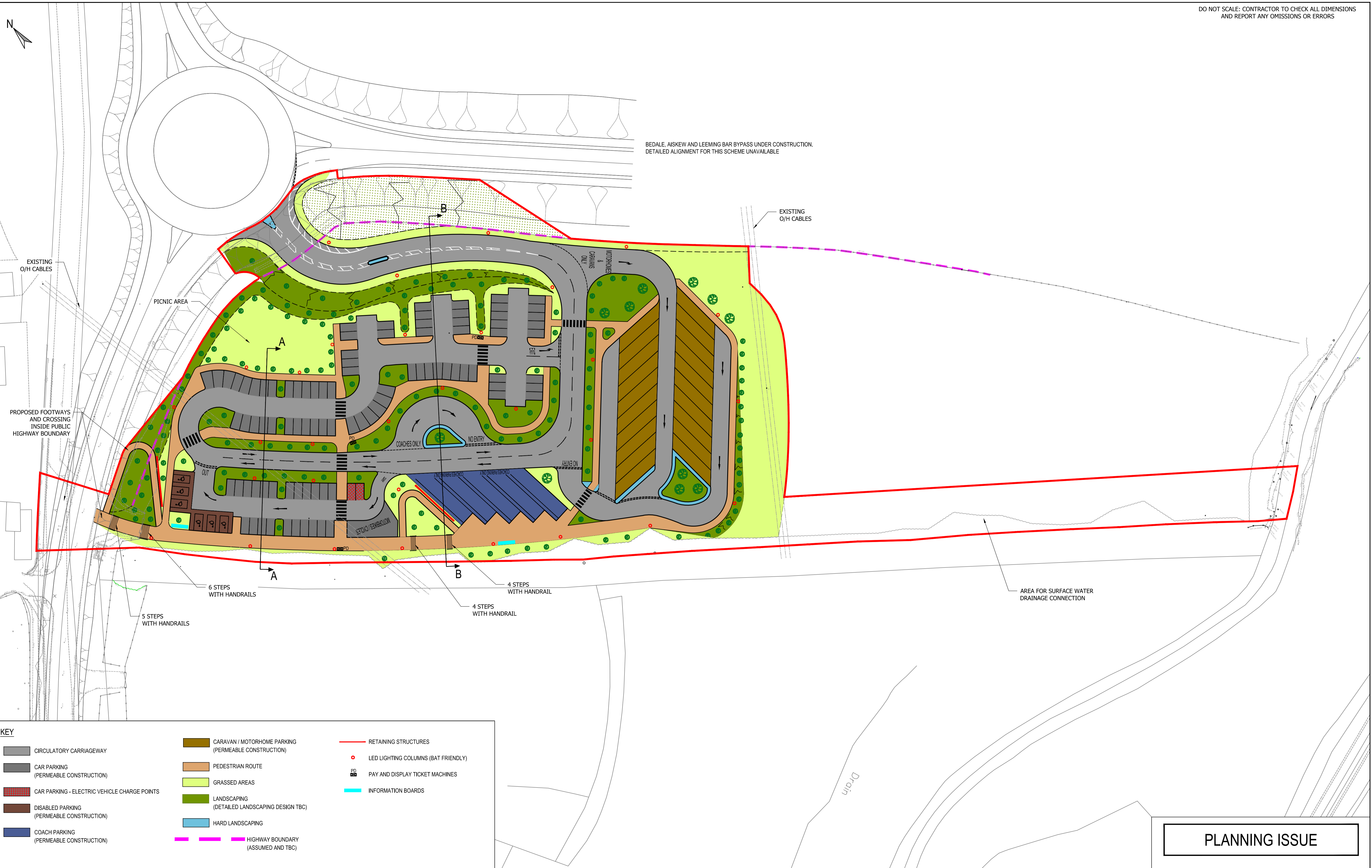
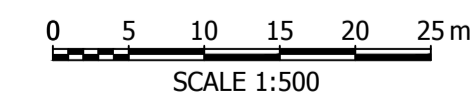


BEDALE, AISKEW AND LEEMING BAR BYPASS UNDER CONSTRUCTION. DETAILED ALIGNMENT FOR THIS SCHEME UNAVAILABLE



KEY			
	CIRCULATORY CARRIAGEWAY		RETAINING STRUCTURES
	CAR PARKING (PERMEABLE CONSTRUCTION)		LED LIGHTING COLUMNS (BAT FRIENDLY)
	CAR PARKING - ELECTRIC VEHICLE CHARGE POINTS		PAY AND DISPLAY TICKET MACHINES
	DISABLED PARKING (PERMEABLE CONSTRUCTION)		INFORMATION BOARDS
	COACH PARKING (PERMEABLE CONSTRUCTION)		CARAVAN / MOTORHOME PARKING (PERMEABLE CONSTRUCTION)
	GRASSED AREAS		PEDESTRIAN ROUTE
	LANDSCAPING (DETAILED LANDSCAPING DESIGN TBC)		LANDSCAPING
	HARD LANDSCAPING		HIGHWAY BOUNDARY (ASSUMED AND TBC)



**PLANNING ISSUE**

REV	DESCRIPTION	BY	CHK	APP	DATE
P2	PLANNING ISSUE	ICG	CR	MB	27.07.16

Scale @	A1	Drawn	Date	Checked	Date	Approved	Date
1:500	ICG	JULY 16	CKR	JULY 16	SJB	JULY 16	

Project No.	Office	Type	Drawing No.	Revision
A096284	21	C	H.01.02	P2

ARNDAL COURT  
HEADINGLEY  
LEEDS  
LS6 2UJ

TEL: +44 (0)113 278 7111  
FAX: +44 (0)113 278 3487  
e-mail: leeds@wyg.com



Project:  
**BEDALE GATEWAY CAR PARK**

Drawing Title:  
**GENERAL ARRANGEMENT**

FILENAME: N:\PROJECTS\A095001-A1000000\A096284\VCAD\DWG\A096284-21-C-H-01.02 - GENERAL ARRANGEMENT - PLANNING ISSUE.DWG | PLOTTED BY: CRAIG RAMSDEN | PLOTTED DATE: 27 July 2016